

# MONTHLY MEMBERSHIP PROGRESS REPORT

LOCATION LOUISIANA

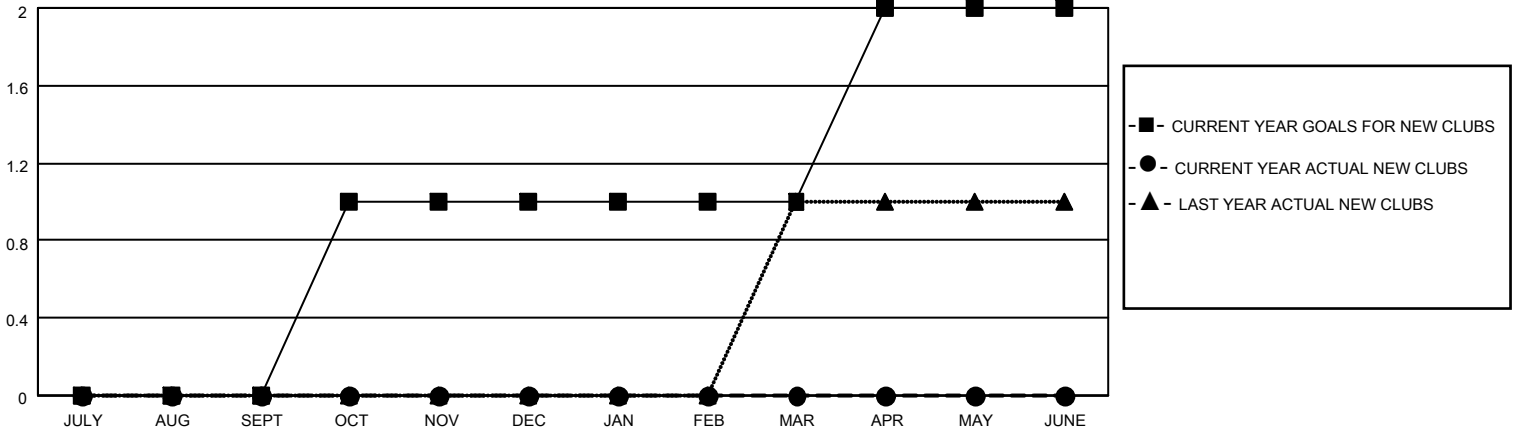
District 8 S

Results as of: 6/30/2023

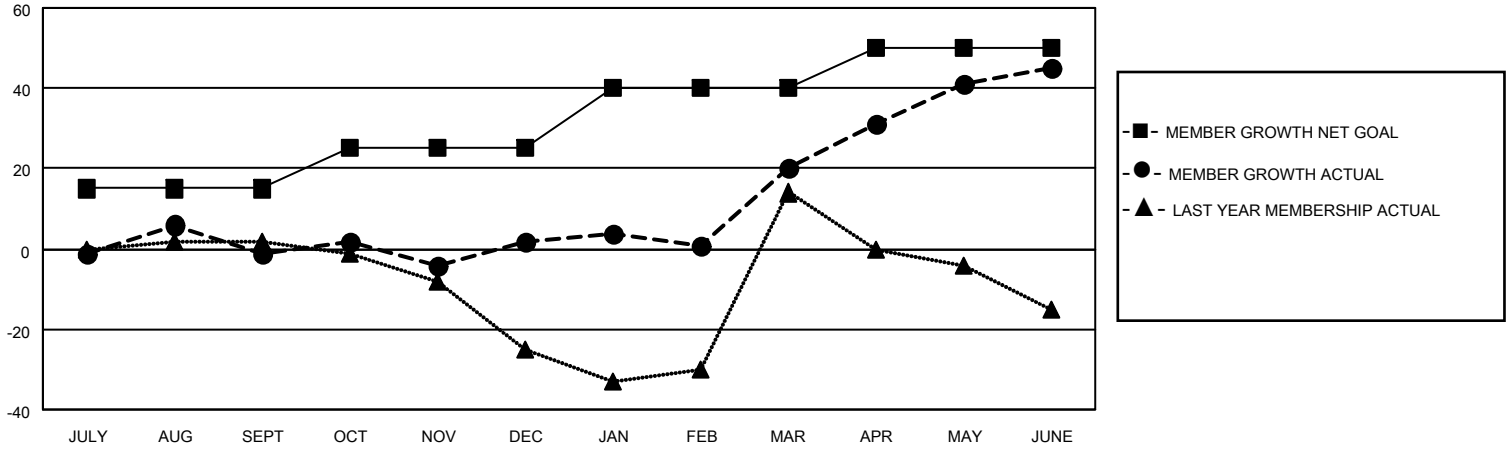
Clubs			
RESULTS FOR 2022-2023			
QUARTER	NEW CLUB GOAL	NEW CLUBS	DROPPED CLUBS
JULY/AUG/SEPT	0	0	0
OCT/NOV/DEC	1	0	0
JAN/FEB/MAR	0	0	0
APR/MAY/JUNE	1	0	0

Members			
RESULTS FOR 2022-2023			
QUARTER	MEMBER GROWTH NET GOAL	MEMBER GROWTH ACTUAL	DROPPED MEMBERS ACTUAL (including transfers)
JULY/AUG/SEPT	15	44	43
OCT/NOV/DEC	10	48	41
JAN/FEB/MAR	15	37	17
APR/MAY/JUNE	10	44	17

**GOALS AND ACTUAL NEW CLUBS CUMULATIVE**



**GOALS AND ACTUAL MEMBERS CUMULATIVE**



**DROPPED CLUBS: 0**

**23 CLUBS OF 34 ADDED 1 OR MORE NEW MEMBERS**

**GENDER DISTRIBUTION**

MALE	516 (51.14%)
FEMALE	491 (48.66%)
NON BINARY	0 (0.00%)
PREFER NOT TO ANSWER	2 (0.20%)

**DROPPED MEMBERS**

[CLICK HERE FOR CUMULATIVE MEMBERSHIP DATA](#)

DECEASED	12
CLUB CANCELLED	0
OTHER	106
<b>TOTAL</b>	<b>118</b>

TOTAL FAMILY UNIT MEMBERS 251

FAMILY MEMBERS PAYING HALF DUES 132